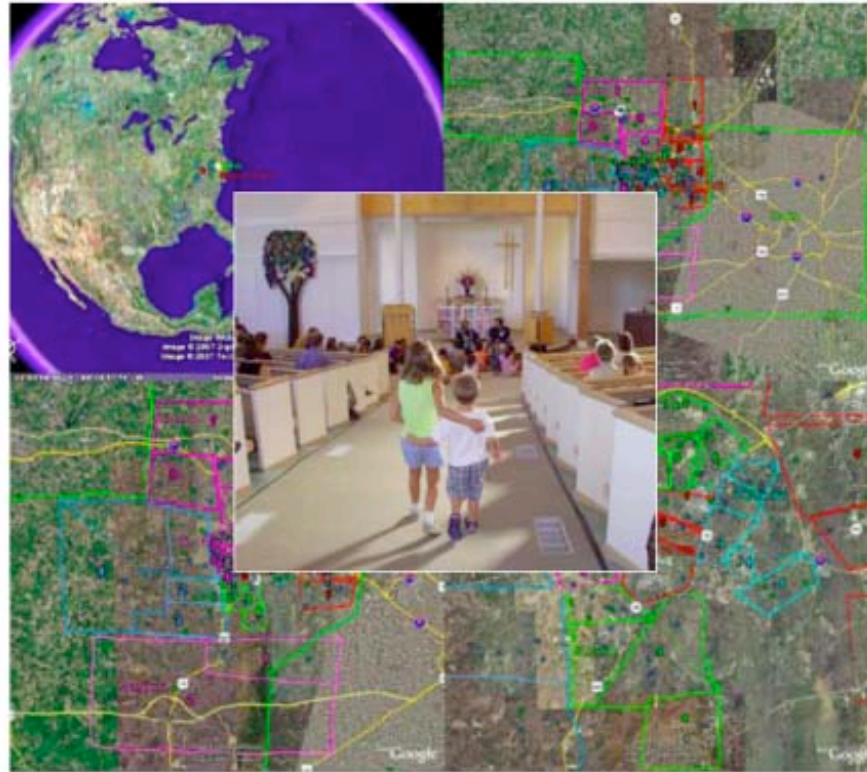


HAND TO HAND • HEART TO HEART
Caring Connections



United Church of Chapel Hill • www.unitedchurch.org
1321 Martin Luther King, Jr. Blvd., Chapel Hill, NC • (919)942-3540
ucch@unitedchurch.org

Caring Connections, High-tech to High-touch

The Google images on the cover of this brochure are a high-tech way to show a low-tech concept. Namely, that many of our members live near the church... and near other members in neighborhoods throughout the area.

It seems like each day brings a new high-tech innovation that makes it easy to connect with each other (some might say too easy) – e.g., cell phones, i-phones, Blackberry's, instant messaging, etc. In the midst of this environment, the Stewardship Team embarked on a mission to encourage members to connect with each other in a more high-touch manner by forming neighborhood groups for this year's pledge effort.

These groups are called Caring Connections groups and will also be used to discover if members want to help with pastoral care, car-pooling or just to get together socially. As our church grows larger, we sense a need for both new and long-time members to feel connected to each other.

Please consider the Church Leadership's Grow 1% challenge. The Leadership team asks that you prayerfully consider if in light of the blessings you have received, you feel able to grow your pledge by 1% of your income to help the Church support this

year's Mission Spending Plan. This year's plan is ambitious with a 10% increase and represents critical needs from each Board. A few of these critical needs are highlighted as examples throughout the brochure. The 10% increase reflects a cumulative increase over two years since the budget was flat in 2007. Many Boards have increased their budgets to restore what they had in 2006.

As background, Protestants in the United States give 2% of their income to charity. Some denominations give more, some less. Many of us would conclude that this is a far cry from responding to God's generous blessings in a proportional way. As a result of the information we have received about our giving here at UCCH, our leadership has joined together in a call to grow our giving incrementally by 1% of income to show our thanksgiving for our blessings and to respond to needs around us.

A first step is to total your family's charitable giving. You may be pleasantly surprised that you are well on your way to giving 5% or 10% of your income as your faithful response to God's blessings in your life. Or, you may decide that it is time to grow your giving. Growing by 1% is not a small amount for anyone, it is a substantial goal and worthy of prayer and planning as we seek to share God's blessings with those who need us.

Giving to the church is one way we express our gratitude for all that we have received as well as our hope for a better world. We have done so much yet there is so much more to do! Increased giving will be needed to support our Annual Mission Plan -- your 1% of income increase will be required for these basic ministries.

Thank you for what you do to help United Church of Chapel Hill.



WHERE ALL ARE WELCOME

Pastors

Jill & Richard Edens
jedens@unitedchurch.org
redens@unitedchurch.org

Associate Pastor for Children's Ministries

Susan E. Steinberg
ssteinberg@unitedchurch.org

Director of Youth & Young Adult Ministries

Frank Boyd
unitedyouth@excite.com

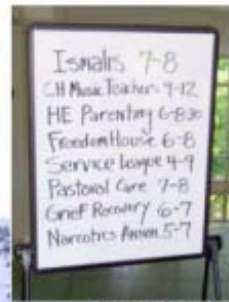
Coordinator of Music Ministries

Mary Beth Petersen
mpetersen@unitedchurch.org

Coordinator of Spanish Language Ministries

David Mateo
dmateo@unitedchurch.org

*To Believe
is to Care.
To Care
is to Do.*



Local Community

To Believe is To Care, To Care is To Do.

Your generous giving breathes life into our church motto by giving us the ability to connect and to bring hope to those throughout our region.

It starts right here in our church building whose rooms are opened to dozens of local groups ranging from Head Start of Orange County to PFLAG to Narcotics Anonymous.

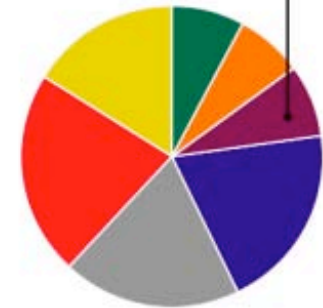
We also connect with many others by our support and participation with the Interfaith Council, UNC Hospital's AIDS Chaplaincy, and Orange County prison ministry ... among many other local organizations.

Critical Needs:

- Continuing to expand support for our missions, such as Habitat for Humanity and Interfaith Council.

- IFC Community House and Kitchen
- Homestart Shelter
- Meals on Wheels
- CROP Walk
- Orange County prison ministry and Yokefellows
- Gay and Lesbian concerns
- Habitat for Humanity

\$73,606 • (8%)



- Reaching Out to Serve Our Community
- Preparing for and Conducting Worship
- Educating our Children, Youths and Adults
- Staying Connected and Caring for Our Church Family
- Equipping and Maintaining our Building and Grounds
- Servicing Our Debt
- Supporting The Wider Mission

Wider Mission

No Borders – No Boundaries

We recognize that our mission extends beyond our physical borders. We are connected to one another across boundaries of neighborhood, class, race, and nationality. A perfect example of these connections are our German interns who personify the strong ties we have with our sister church, the Evangelical Church of the Rhineland.



Our Church's Wider Mission describes the work we do through our contributions to the national United Church of Christ – via UCC conferences, national ministries, and UCC-related institutions.

Our Church's Wider Mission is exemplified by the following: irrigation pipes in the desert, military chaplains in Iraq, new pastors for congregations, refugees coming home to their new country, domestic and international disaster preparedness and response, fighting for economic justice ... and much more. For more information, visit ucc.org.

Through your giving the United Church of Chapel Hill participates in the UCC's other special church wide offerings, and is also an active member of UCC's Southern Conference and Eastern North Carolina Association.

Critical Needs:

- House and feed our German interns through the Johnson Intern Program. Our interns provide a much needed 32 hours a week to staff our various outreach ministries: IFC, Habitat for Humanity, the Alternative Christmas Market, Prison Ministry and others.
- Greatly enhance our Mission and Outreach efforts with one "Peace and Justice" intern and one Divinity School intern.

- One Great Hour of Sharing
- The Christmas Fund
- Neighbors in Need
- Strengthen the Church offering
- Our Church's Wider Mission
- UCC Southern Conference and Eastern North Carolina Association
- Youth group mission trip



- Reaching Out to Serve Our Community
- Preparing for and Conducting Worship
- Educating our Children, Youths and Adults
- Staying Connected and Caring for Our Church Family
- Equipping and Maintaining our Building and Grounds
- Servicing Our Debt
- **Supporting The Wider Mission**



Worship

Connecting To God ... To Ourselves

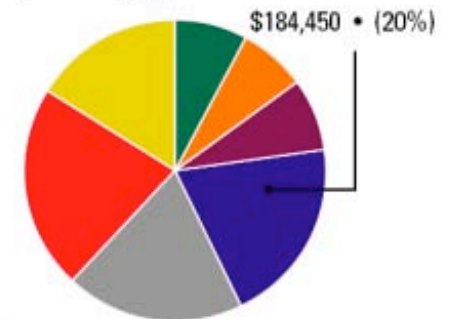
Worship is the heart of how we connect with our faith community and is our common time together as the people of God. Your giving provides what is needed to embrace this sacred time.

Bread and cup, flowers and candles, heat and light, beautiful wide open spaces, pealing bells and majestic organ, diverse musical ensembles and groups – from Brass to Gospel with voices young and old.

Pastors preaching inspiring messages, sound systems to better hear, bulletins to keep us on the same page ... services thoughtfully prepared and prayerfully led on Sunday mornings to quiet contemplative Taizé services, solemn Easter Vigil, joyful candlelight Christmas eve services ... Youth Confirmation classes and much more.

- Baptisms
- Memorial Services
- Weddings
- Laity Sunday
- Ash Wednesday
- Maundy Thursday
- Good Friday
- Easter Vigil
- Communion
- Sunday Services
- Taizé services

- Christmas services
- Blessing of the Animals
- Chancel Choir
- Instrumental ensemble
- United Voices of Praise Gospel choir
- Youth Music and Drama program
- Joyful Noise hand bells
- JuBELLation ringers
- Children's choir
- Bronze Voices hand bells
- Jazz band, Brass ensemble
- Chamber Choir
- Organist
- Music Director
- Confirmation class
- Alive@Five
- Spanish Language Services



- Reaching Out to Serve Our Community
- **Preparing for and Conducting Worship**
- Educating our Children, Youths and Adults
- Staying Connected and Caring for Our Church Family
- Equipping and Maintaining our Building and Grounds
- Servicing Our Debt
- Supporting The Wider Mission



Teaching and Nurturing

Finding Answers, Getting Direction

Disciplineship is a never-ending journey as we continually strive to learn, grow and find direction.

A bountiful myriad of learning opportunities exists for all of us, no matter what our stage of life. We encourage you to find educational groups that share your interests and help you connect with other members in a meaningful manner.



From our extremely popular K-12 Sunday church school led by our Associate Pastor and Youth Director, grant-winning children's education programs, Vacation Bible school and monthly Children's Church – to engaging and exciting programs for middle and senior high's with Sunday evening youth groups, Mission trips, Fall and Spring retreats – as well as compelling and numerous opportunities for the rest of us, including mid-week Bible study, Sunday morning programs, mid-week Lenten and Advent series, Faith and Family class, Church retreats ... and many others that spring from your joyful giving.

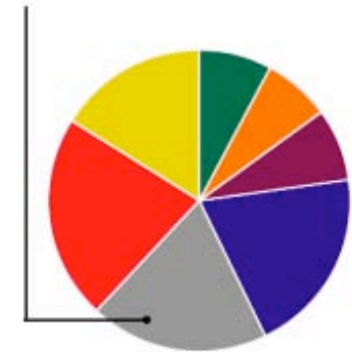
Critical Needs:

- Our Sunday school program's popularity has led it to almost burst at the seams with 51 children in the nursery (1st grade & below) and most church school classes range from 15-20 members – this is as large as many private schools and strongly suggests that we consider adding a part-time Sunday school superintendent.

- Church school
- Nursery, Faith Explorations
- Turnings Toward Spiritual Growth
- Parenting group
- Church retreats
- Mission trips
- Adult forum
- Monday book group
- Wednesday Bible study
- Wednesday evening programs

- Youth groups
- Youth Mission trip
- Youth retreats
- Curriculum
- Pastors
- Youth Director
- Associate Pastor for Children's Ministries

\$173,959 • (19%)



- Reaching Out to Serve Our Community
- Preparing for and Conducting Worship
- Educating our Children, Youths and Adults
- Staying Connected and Caring for Our Church Family
- Equipping and Maintaining our Building and Grounds
- Servicing Our Debt
- Supporting The Wider Mission



Communicating and Caring

Welcoming. Caring. Informing.

Three powerful words that exemplify how we personally connect with each other.

Our Pastors and staff extend a welcoming hand to every visitor with personal notes, and hold Interested Persons teas to visit with those considering joining. We gather in the Fellowship Hall for large feasts and weekly coffee hours. We are able to surround members experiencing times of crisis with pastoral presence and loving support from our Pastoral team and 115 caregivers from the congregation who make up our "web of care". For those seeking solace, encouragement and support, our church services include healing prayer with our Pastor and volunteer Parish Nurse.

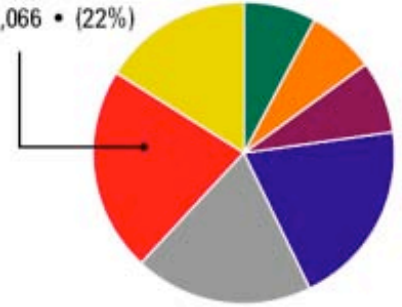
Church news travels fast via our church office communications hub run by our office manager and many volunteers who make up a well-oiled operation to fold and send newsletters and bulletins, update and run our internet site (unitedchurch.org), send weekly emails and coordinate the use of church rooms ... among numerous other tasks.

Growing Future Ministry:

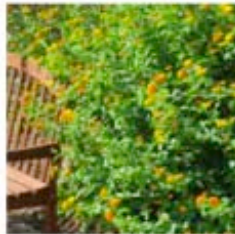
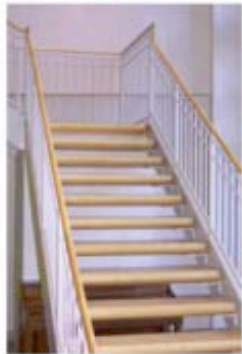
• Growing pledges by 1% of income will provide funding for the Parish nurse, one of our most beloved ministries at United Church (currently an unfunded ministry)

- 115 caregivers
- UCCH prayer shawl knitters
- Parish Nurse (volunteer)
- UnitedChurch.org
- home and hospital Pastoral visits
- Bulletin and Newsletter volunteers
- Internet team
- Office manager
- Business manager
- Insurance audit
- Office supplies

\$191,066 • (22%)



- Reaching Out to Serve Our Community
- Preparing for and Conducting Worship
- Educating our Children, Youths and Adults
- Staying Connected and Caring for Our Church Family
- Equipping and Maintaining our Building and Grounds
- Servicing Our Debt
- Supporting The Wider Mission



Building/Mortgage

Bricks, Mortar and Spirit

Although made of ordinary bricks and mortar, our building radiates with the spirit of a thriving congregation. Step inside and feel, see and hear our energy.

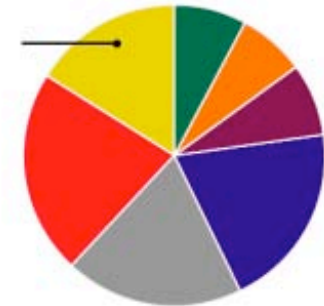
Our church has become a welcoming haven to those in the community who use our rooms for meetings and gatherings. Day or night, morning or evening, drive by almost any time and you'll see our building hard at work serving our congregation and community.

Due to the success of two capital campaigns (i.e., Opening Doors, Changing Lives and Faith Forward), our church's soon to be completed expansion will help us provide additional rooms for community outreach as well as to house our overflowing children's education program.

To keep our building and grounds clean and inviting, our custodial staff and many volunteers work diligently on maintenance and upkeep. In addition, your giving also goes towards paying the building mortgage.

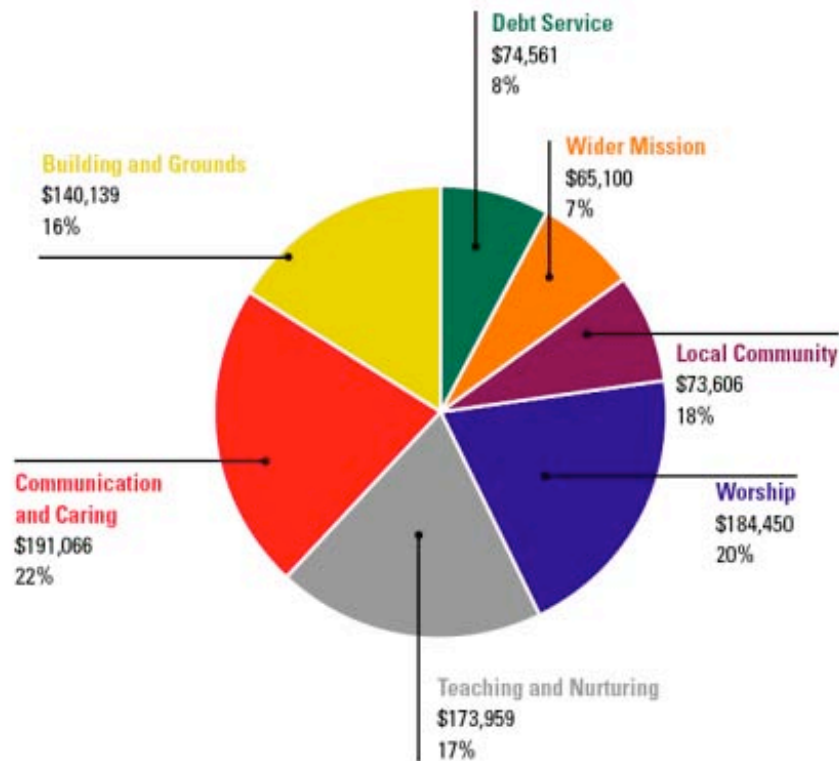
- Equipping and maintaining our building and grounds
- Paying our mortgage
- Custodial services
- Telephones
- Furniture
- Utilities

\$140,139 • (16%)



- Reaching Out to Serve Our Community
- Preparing for and Conducting Worship
- Educating our Children, Youths and Adults
- Staying Connected and Caring for Our Church Family
- **Equipping and Maintaining our Building and Grounds**
- Servicing Our Debt
- Supporting The Wider Mission

2008 Mission Spending Plan



A Closing Word

Social Networking – Connections

One of the newer buzzwords in the Internet world is the phrase social networking.

Which, per Wikipedia, is defined as “communities of people who share interests and activities, or who are interested in exploring the interests and activities of others.”

You’ve probably heard of sites that tap into this phenomenon – e.g., MySpace, Facebook and YouTube. These sites attract audiences in the millions, and are valued in the billions.

Obviously these sites fulfill a need among a great many people. But in the rush to the internet we shouldn’t forget time-proven, traditional ways that people have used to connect with others who share our interests – namely churches like United Church of Chapel Hill. Well beyond helping us stay in touch with friends, United Church encourages us stay true to ... and to act according to our beliefs as Christians. Our church is where we learn that God expects us to feed the hungry, shelter the homeless, clothe the naked, care for the orphan.

That’s why the Stewardship Team developed the “Caring Connections” idea as another way to encourage members to reach out to other members ... and it’s also why we created this brochure.

This brochure highlights the many activities and programs that the Church supports. Hopefully it will help you find a group that shares your interests and encourages you to find new ways to your God-given talents.

This brochure is also meant to help you as you consider your pledge by breathing life into the many ways that United Church serves God ranging from the mundane to the truly inspiring.

At the end of the day, we all want to connect with people and God in meaningful ways ... that’s the mission United Church tries its best to fulfill each and every day.

We hope you’ll find this brochure helpful as you prayerfully consider your pledge.

Using the gifts that God has given us to do the work God is calling us to do



Above and Beyond

Your generous support goes well beyond supporting the Annual Mission plan with your gifts of talents and time to help the Church's many programs and activities.

Your financial support also doesn't stop with the Annual Mission plan. In fact, above and beyond their pledge commitments, members gave almost \$130,000 in 2006 and over \$70,000 through August of this year

to provide even greater support of programs like Habitat for Humanity, the Inter Faith Council, Mission trips and Our Church's Wider Mission.

That's an inspiring sign of your generous spirit... and of a vibrant, caring congregation.

And for that we thank you.

The Stewardship Team

United Church of Chapel Hill



*To Believe is to Care...
...To Care is to Do*

This brochure was created by church members and printed on the church copier.

PowerPoint presentation created by Stuart Westland and Dick Hill